



CHLORAMINE BOOSTING SYSTEM

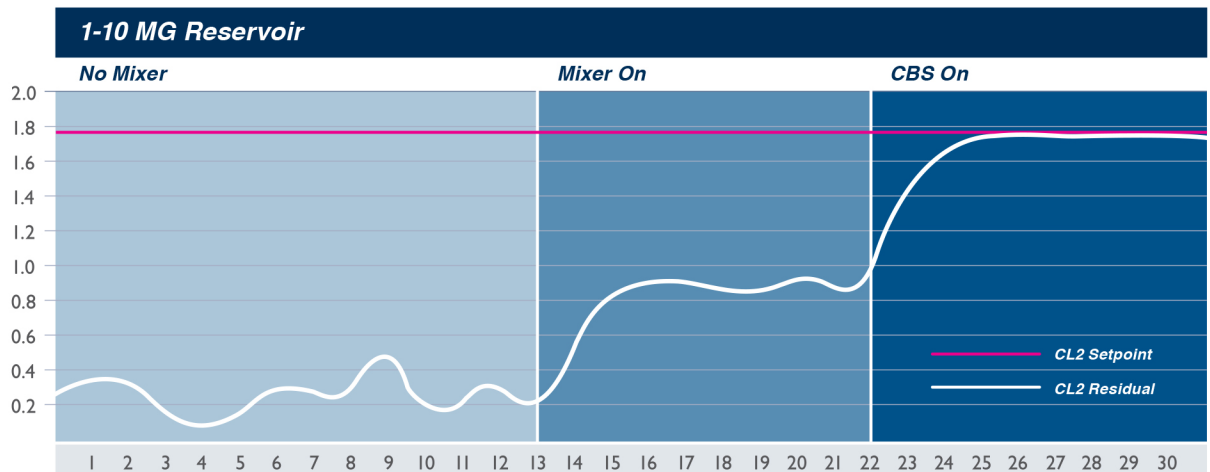
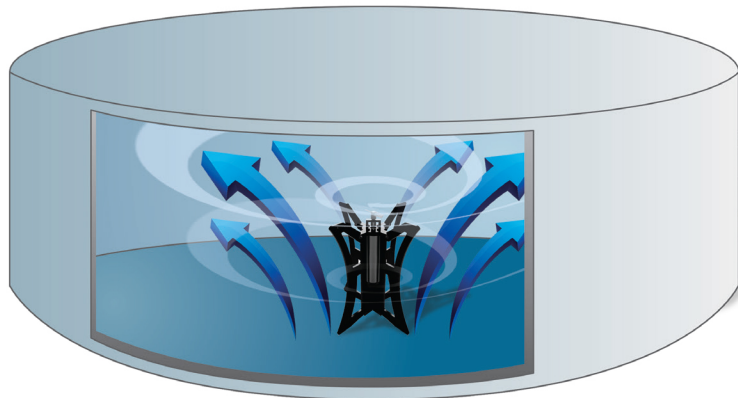
The Big Wave Water Technologies **CHLORAMINE BOOSTING SYSTEM (CBS)** is a flexible, precise, and dependable system for maintaining consistent free or total chlorine residual in water reservoirs. The **CBS** maintains uniform water quality throughout the entire reservoir by preventing stratification while accurately dosing sodium hypochlorite and/or ammonia with minimal operator involvement. The highly accurate chlorine residual analyzer and its ability to measure either Free or Total chlorine residuals, in conjunction with the operator interface, allows the **CBS** to control to the operator selected set point. From potable water reservoirs to standpipes, the **CBS** helps operators gain control of water quality in both the reservoir and distribution system.

Applications

- Reservoirs
- Standpipes
- Distribution Systems

Key Benefits

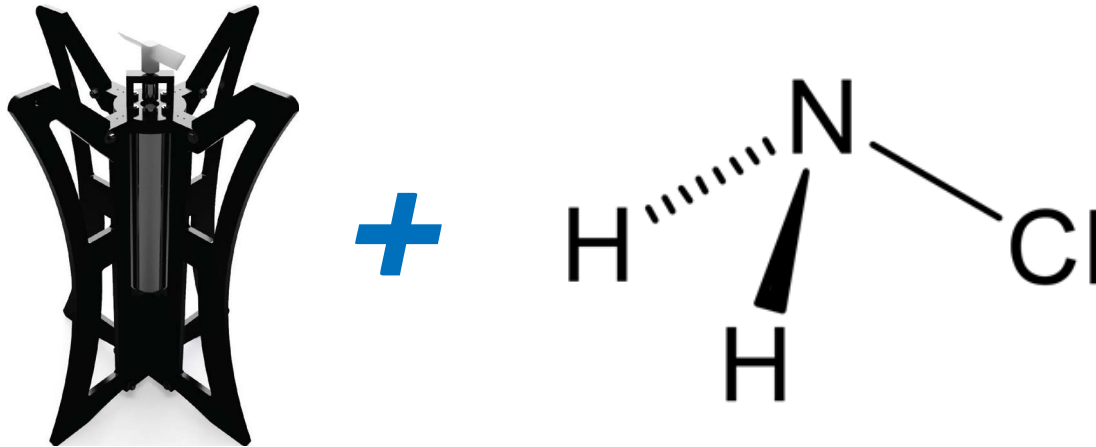
- Continuous measurement of water quality
- Decrease in maintenance hours
- Control reservoir remotely
- Reduce need for tank cleaning
- Reduce chemical inventory
- Low power consumption
- Solar options available
- Modular design
- Proven amperometric reagentless chlorine measurement
- Chemical dosing control to an operator selected point
- Maintain uniform water quality throughout the reservoir
- Various disinfection methods can be utilized
- Portable systems available
- Demo units available
- Results guaranteed



Uncirculated reservoirs tend to have low residuals throughout the reservoir, especially at the upper levels. When reservoirs are circulated, the residual tends to be higher and uniform throughout the entire reservoir. The Chloramine Boosting System allows the operator to set an ideal residual level throughout the entire reservoir.



Big Wave Water Technologies believes in a very simple and effective equation for success.



POWERFUL MIXING + CHEMICAL ADDITION = CHLORAMINE BOOSTING SYSTEM

1. Our active mixer meets or exceeds industry standards, out-performs the competition, and is economically priced.

2. Our Chloramine Boosting System works with customer preferred or existing chlorine analyzer.

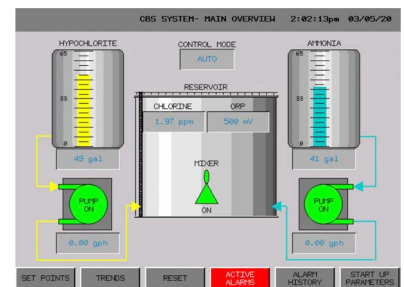
3. Our proprietary control panel is reliable, operator friendly, and easy to use.

4. The control panel regulates the chemical addition.



1. 2.

4. 3.



For more information or to schedule a presentation, please call
667.244.9283 (667.BigWave) or visit **BigWaveWater.com**